

# **Ideal Elderly Community Center Sites in Alachua County**

By: Alex Sachon, Dave Johnson,  
Conner Bryan, Nathan Kelley



# Project Goals

- To find the ideal locations for construction of three community centers for elderly.
- Purpose: Improving quality of life for elderly community.
- Ideal sites: Should best target the disadvantaged and elderly community population.

# Criteria For Establishing Goals

- Limitations
- Target Demographic
- Public Services

# 1<sup>st</sup> Criteria

## Limitations:

1. Hazardous Waste Zones.
2. Sewage Treatment Facilities.
3. Solid Waste Areas.
4. Conservation Areas.
5. Superfund Sites.



## 2<sup>nd</sup> and 3<sup>rd</sup> Criteria

### Necessities:

1. Demographics:
  - Senior citizens 65 years and older.
2. Public Services:
  - Bus routes.
  - Hospitals.
  - Fire stations.
3. Geography:
  - Parks and recreation.
  - Lakes.
  - Municipality boundaries.



## Data Layers Used

municipalities  
parcels  
lakes  
majrds (major roads)  
alachua\_county\_boundaries

hazardous\_waste  
sewage\_treatment  
solid\_waste  
superfund  
conservation areas

Ala\_empl\_infoUSA (Alachua county businesses)  
fire\_dept  
transit\_routes (bus routes)  
hospitals  
schools

cenblk01 (census blocks)

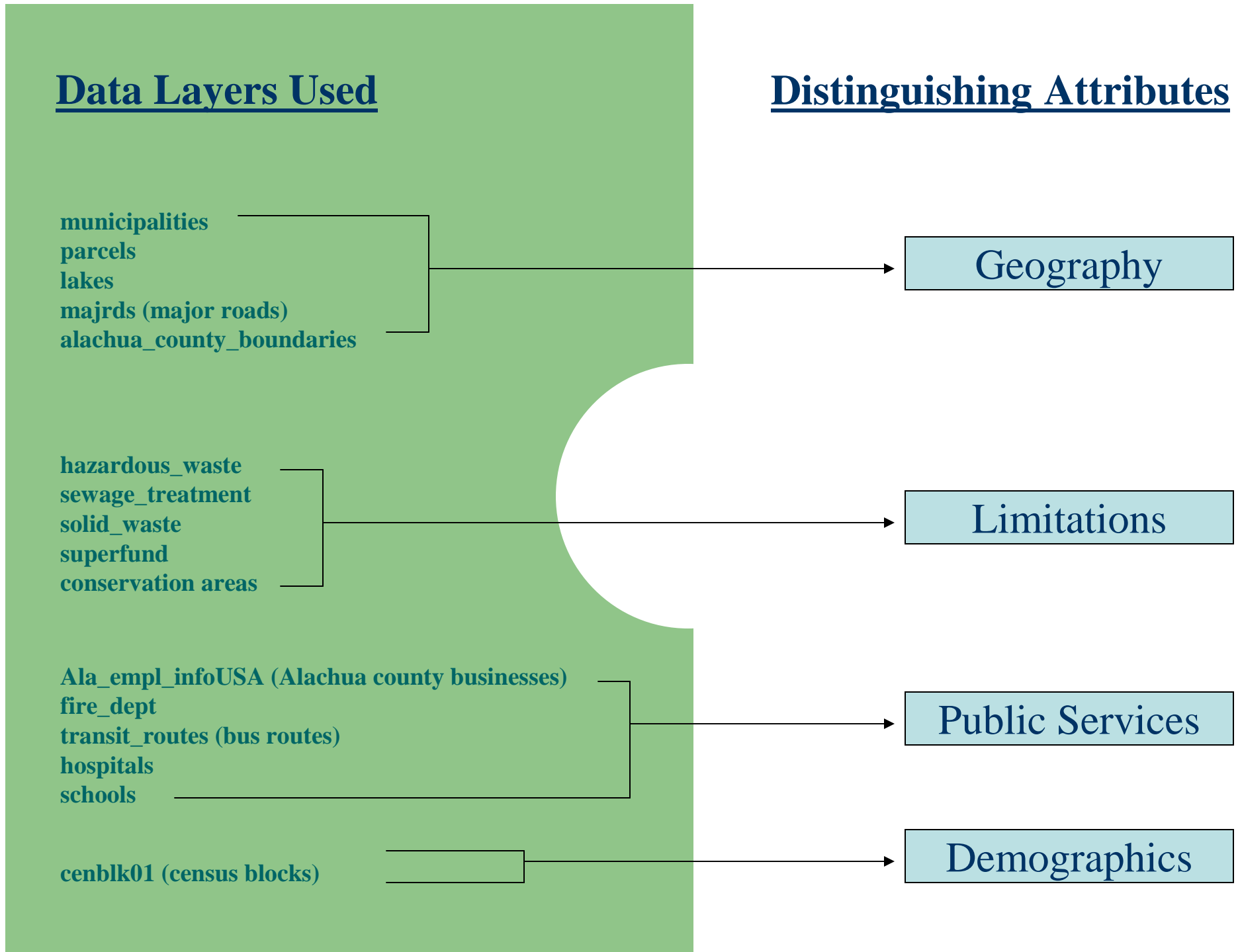
## Distinguishing Attributes

Geography

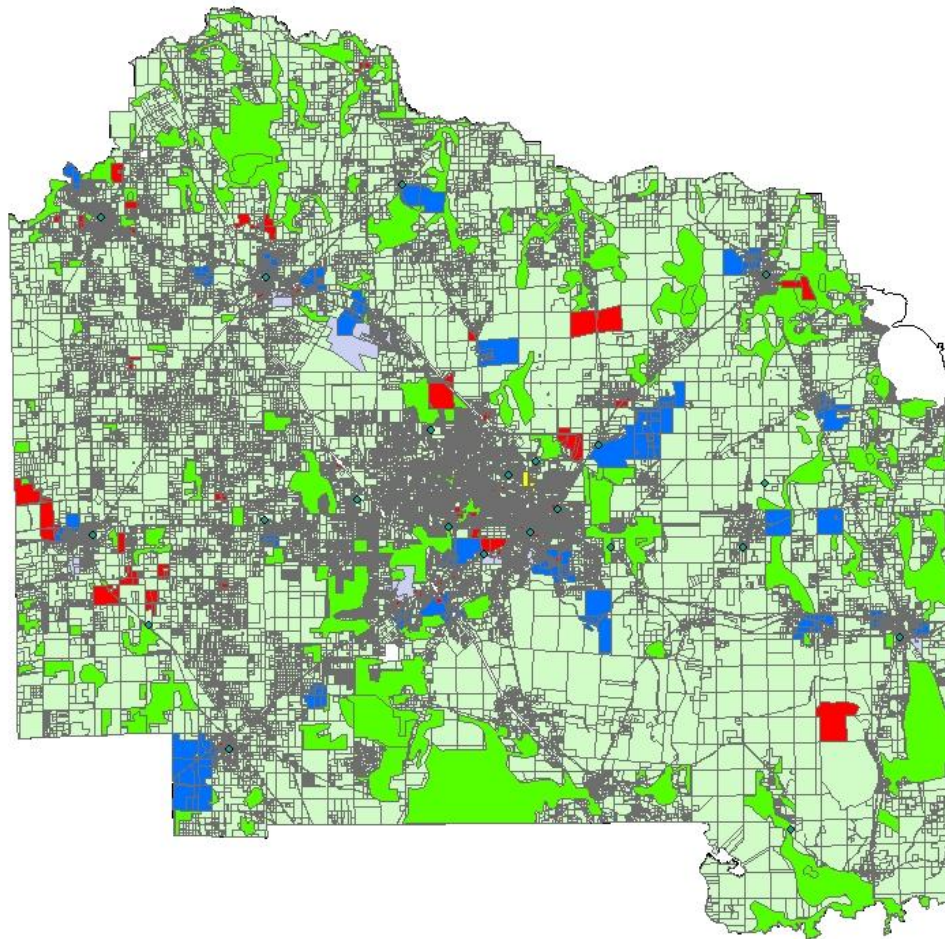
Limitations






Public Services

Demographics



# Hazard areas defined by varying distances.

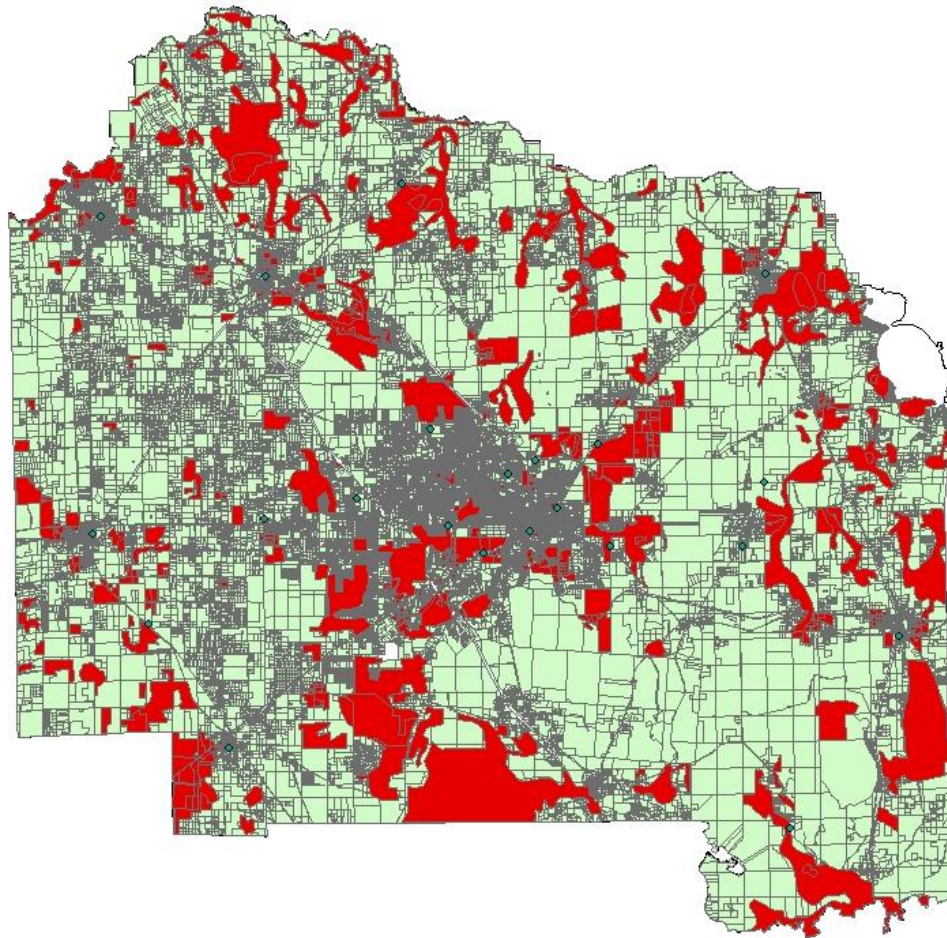


-  Conservation Areas
-  Superfund Sites (within 1500 ft.)
-  Sewage Treatment (within 1000 ft.)
-  Solid Waste (within 1500 ft.)
-  Hazardous Waste (within 500 ft.)



## Bad Parcels:

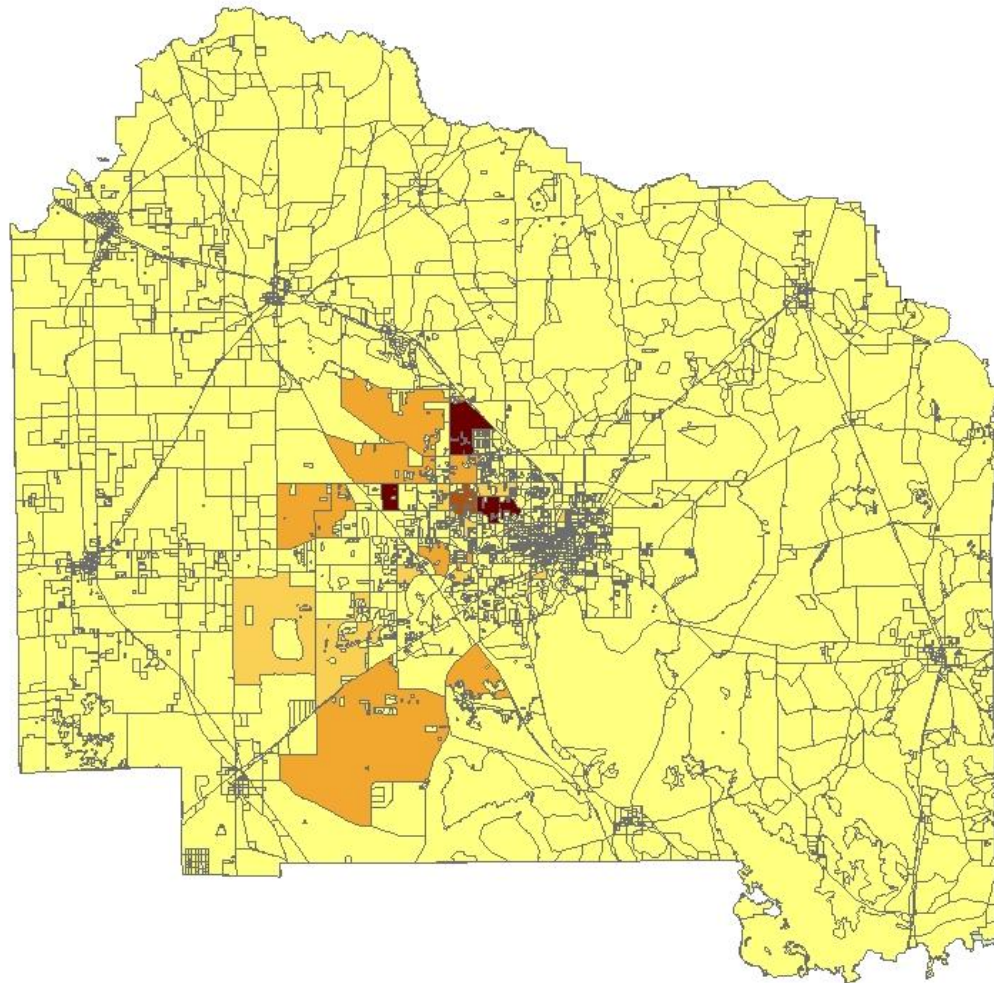
All restriction criteria merged into one shape-file.





# Target Demographics:

- Citizens 65 years and older

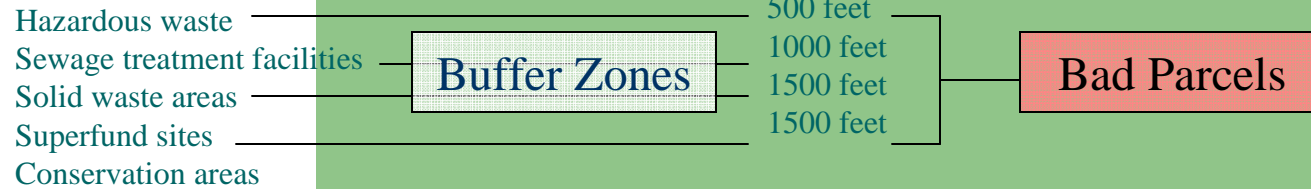


Low

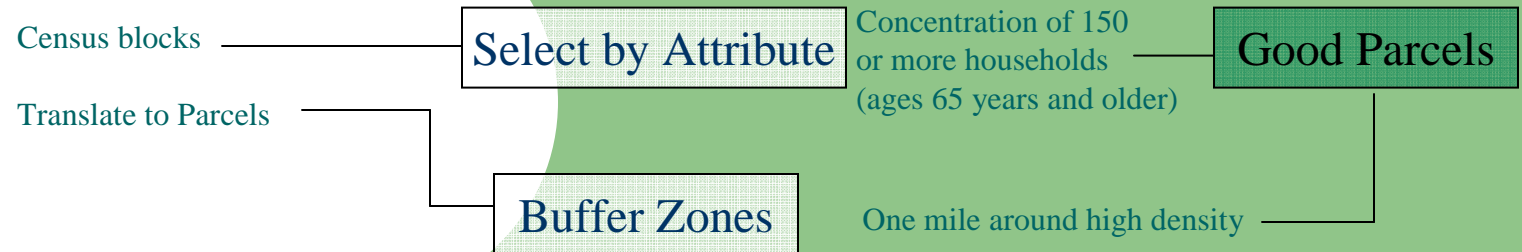
High

# From Good & Bad to Target

## Limitations



## Demographics

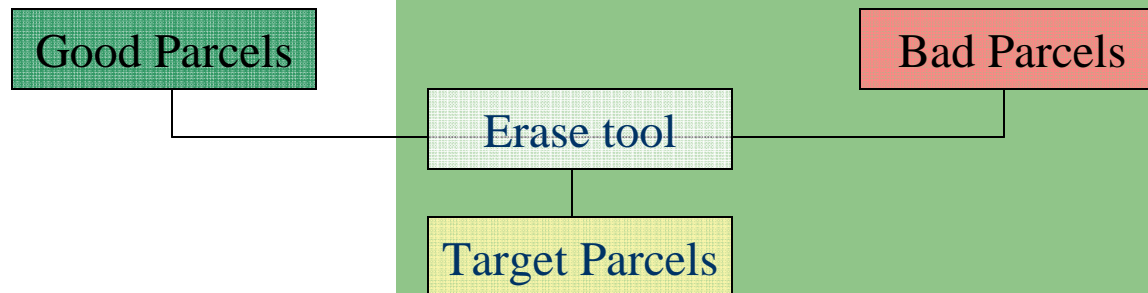


## Good Parcels

## Bad Parcels

## Erase tool

## Target Parcels



# From Target To Final

Target Parcels

Public Services

Alachua county businesses

Fire department locations

Public transportation routes (bus routes)

Hospital locations

Schools locations

Select by Location

5 miles

2 miles

5 miles

2 miles

Geography

Municipalities

Parcels

Lakes

Major roads

Alachua County Boundaries

Select by Attribute

Less than 20,000 sq. ft.

Select by Attribute

Less than 1 acre

Select by Attribute

Commercial buildings

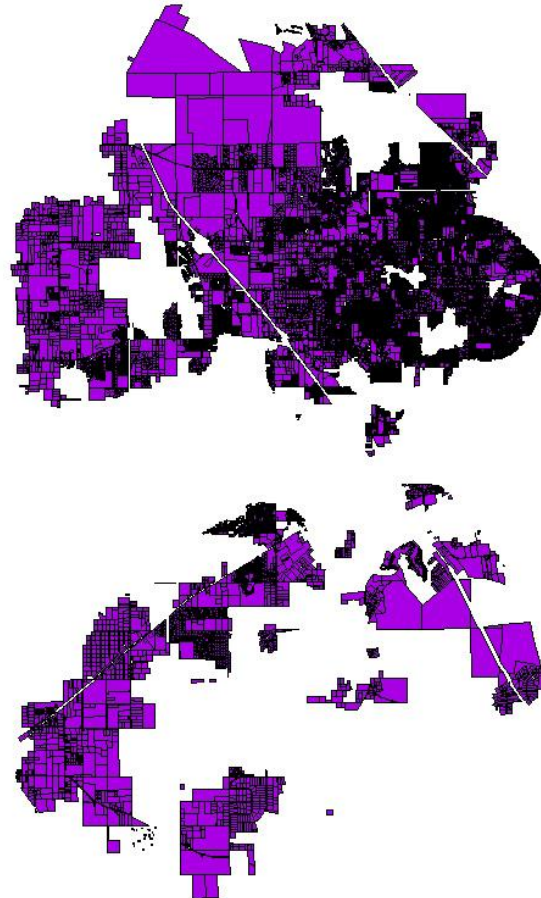
Select by Attribute

Less than \$1,000,000

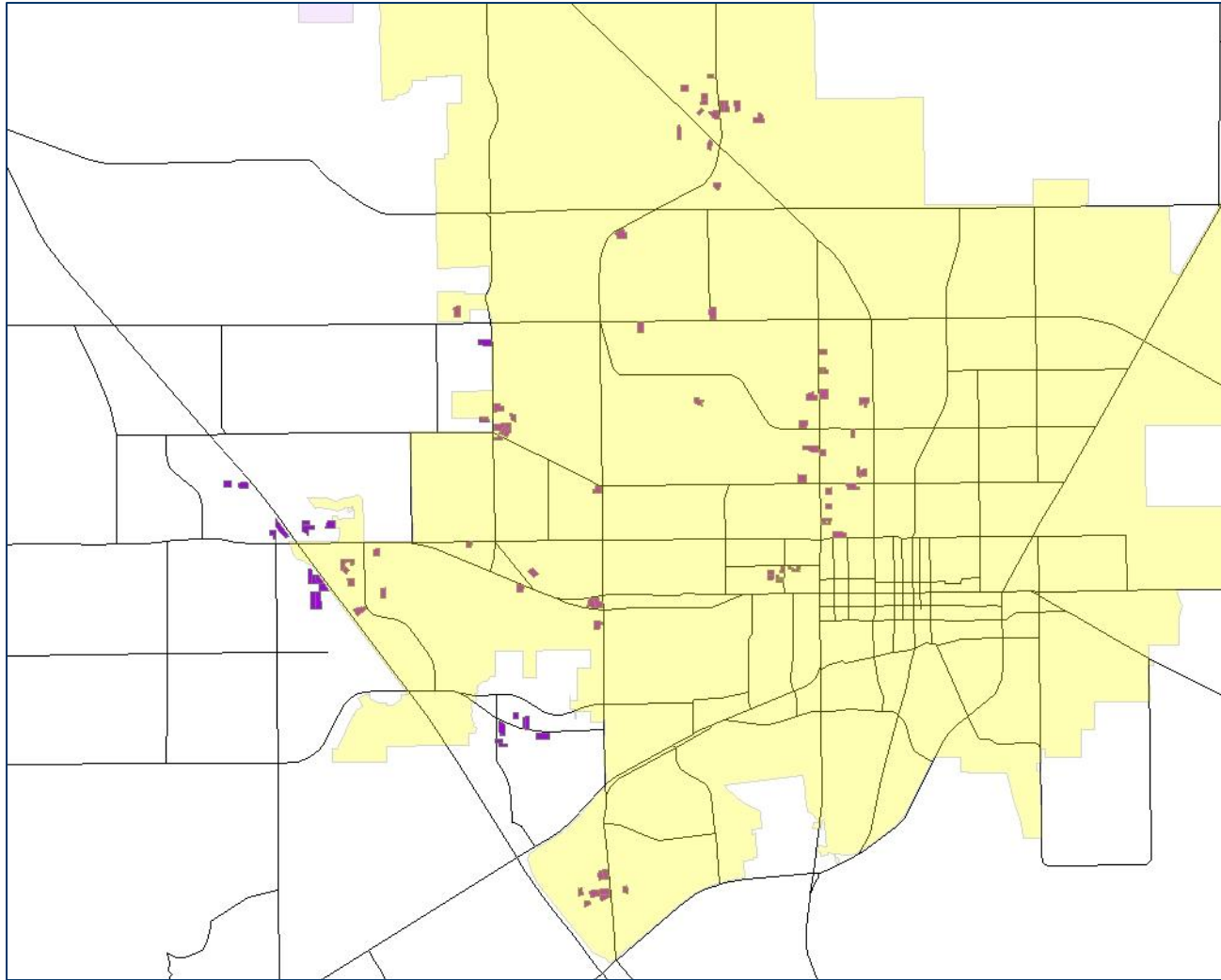
Final Parcels

# Narrowing Selected Features

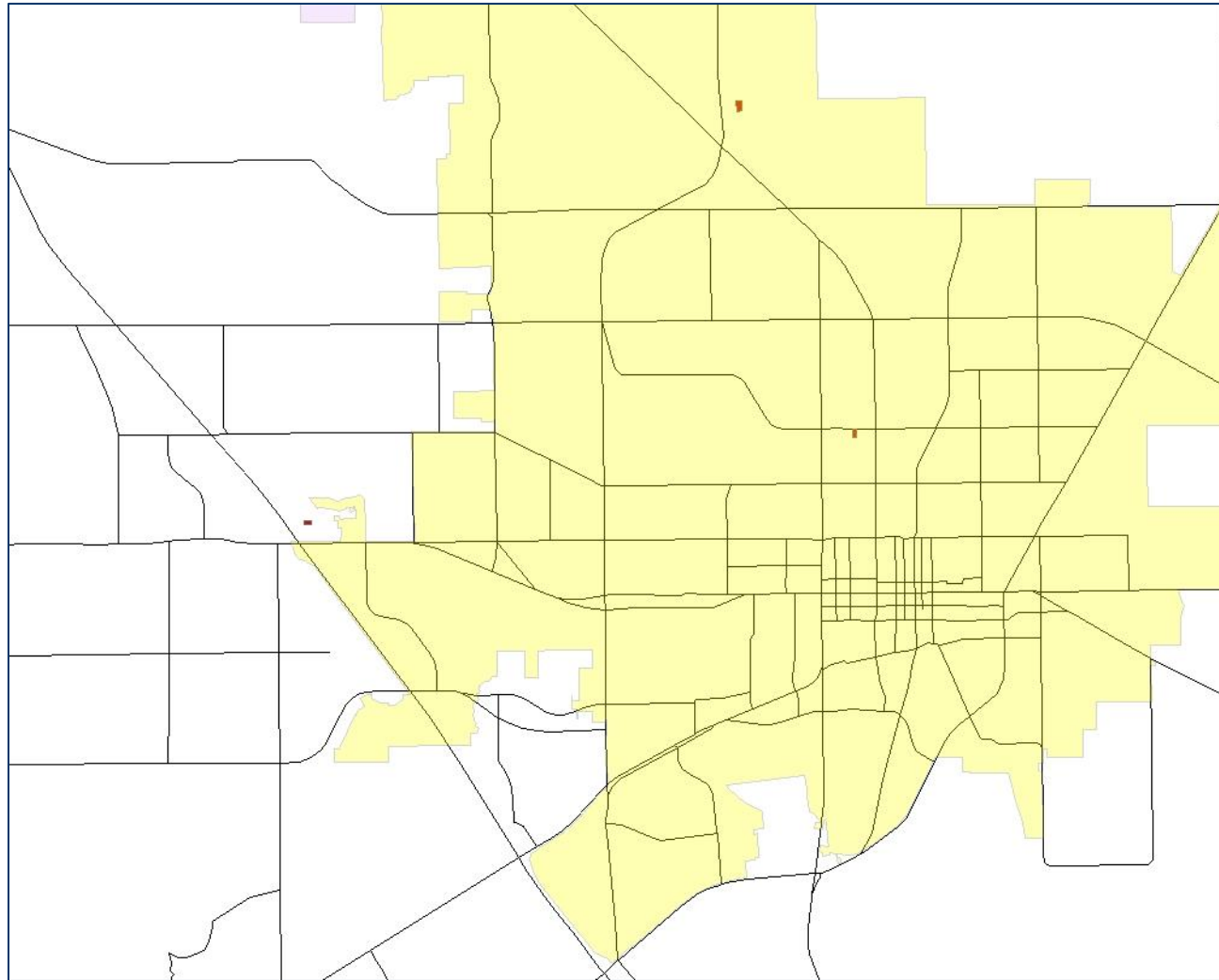
- By limitations
- By fire s
- By hosp
- By scho
- By bus r
- By squa
- By acreage



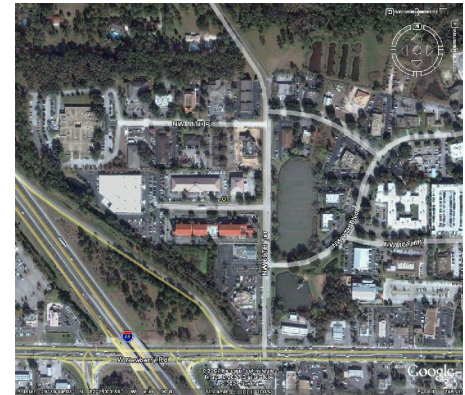
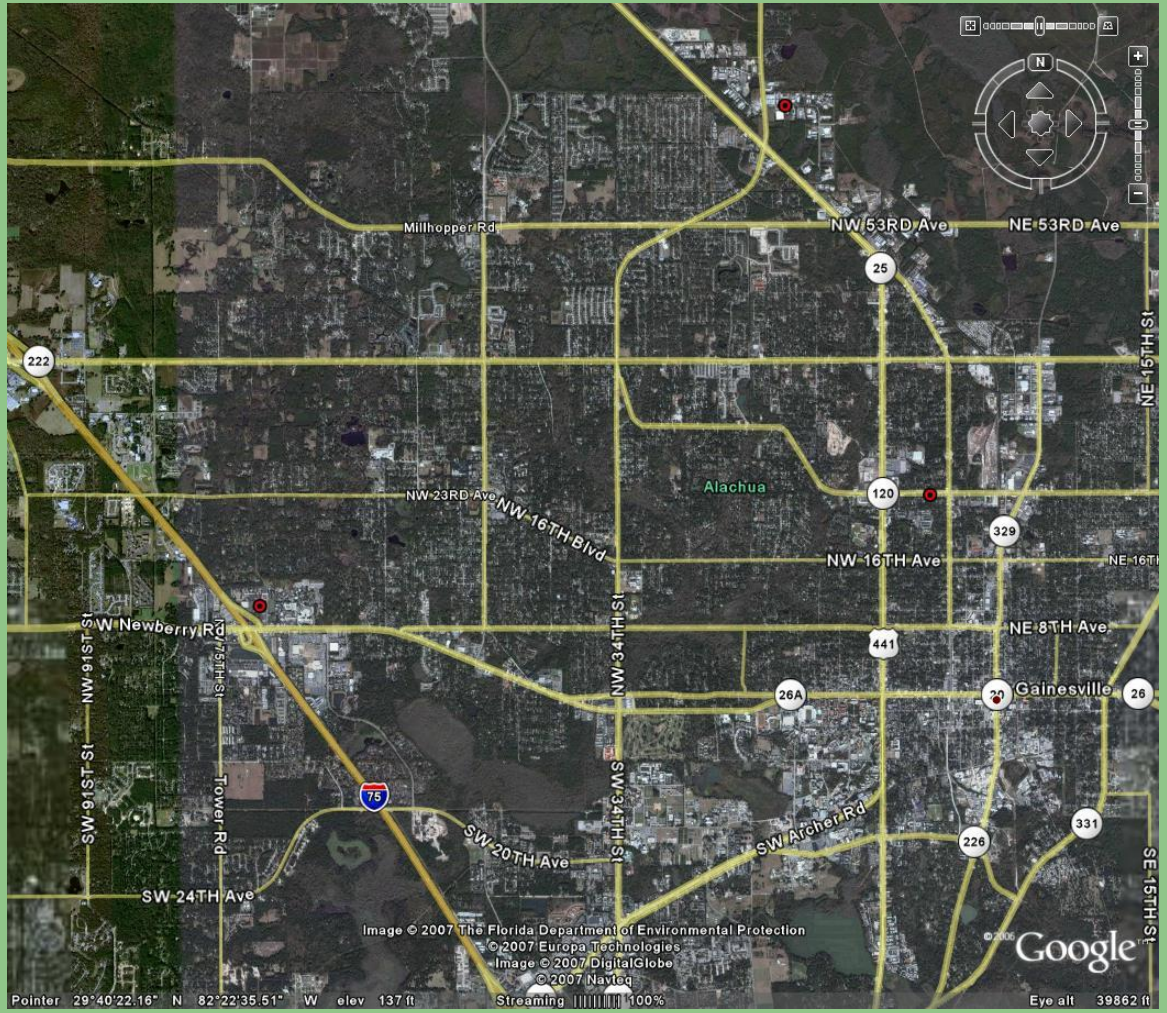
## Narrowed By Usage: 26 Parcels Left



# Narrowed By Cost: 3 Parcels Left



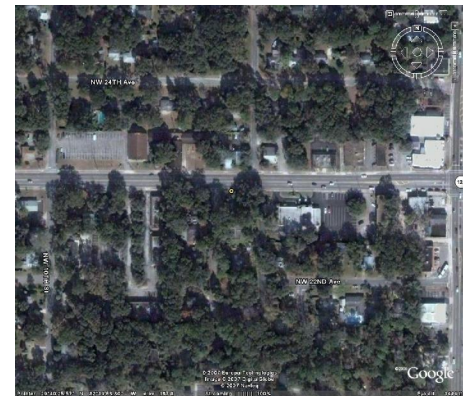




Site 1



Site 2



Site 3